

U-DRAIN PRO

UDP 50-100 (50-105)
UDP 100-65

1/2

Drainage channel made of plastic (PVC dark gray) with designer grille made of anodized aluminium in silver and black

- Installation Instructions -



GENERAL

The U-DRAIN pro drainage channel is intended for use in the immediate vicinity of a residential building.

The products may only be installed in areas where no high traffic loads and vehicles are expected.

In the case of vertical drainage, a channel of up to 6 m per drain and in the case of horizontal drainage, max. 5 m channel can be installed at a stretch.

U-DRAIN pro can be shortened as needed. Drainage of the water can also take place in a seepage system, for example, to sustainably improve the water balance of the soil!

INSTALLATION INSTRUCTIONS

1. Dig a foundation.

U-DRAIN pro 50-100 (50-105) requires a foundation that is at least 8 cm high and 14 cm wide. U-DRAIN pro 100-65 requires a foundation that is 5 cm high and 10 cm wide.

2. Check whether all parts for the desired installation are available and lay them out on a flat and clean surface!

3. Determine the drainage location. If the drain is vertical, mark it in the right place on the back of the channel using the drain support. Saw out the marked hole using a compass saw. If the drain is horizontal, the drain support is fixed horizontally as an end piece.

4. Now you can apply Dural U-PVC adhesive for a waterproof seal.

Channel bodies, corner pieces and T-pieces are universally glued to the connector. End caps and drain supports are also glued on using the Dural U-PVC adhesive.

Insert the grille to check the accuracy of fit after gluing!

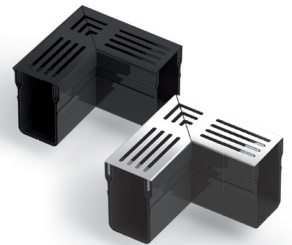
The waiting time to achieve functional strength is approx. 30 minutes (cold welded).

5. Prepare the foundation! The foundation can be made of 1:3 concrete, 1:4 single-grain mortar or as a gravel bed!

6. Depending on the size of the channel system, place the glued channel system onto the prepared foundation either alone or with the help of others. Put the grille back in place and align it. In the case of concrete or single-grain mortar, pull a wedge along the channel to achieve lateral stabilization.

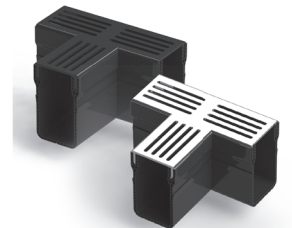
7. After the foundation has hardened, any type of flooring can be applied.

DURAL



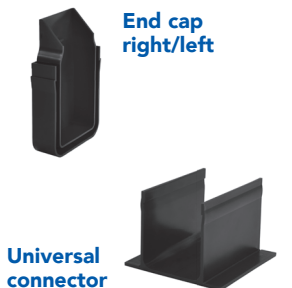
Corner piece

UDP 100-65



T-piece

UDP 100-65



Universal connector

UDP 100-65

DURAL GmbH

Südring 11

D-56412 Ruppach-Goldhausen

Phone +49(0) 2602/9261-0

Fax +49 (0) 2602/9261-50

info@dural.com

U-DRAIN PRO

UDP 50-100 (50-105)

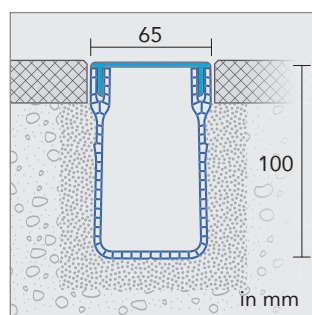
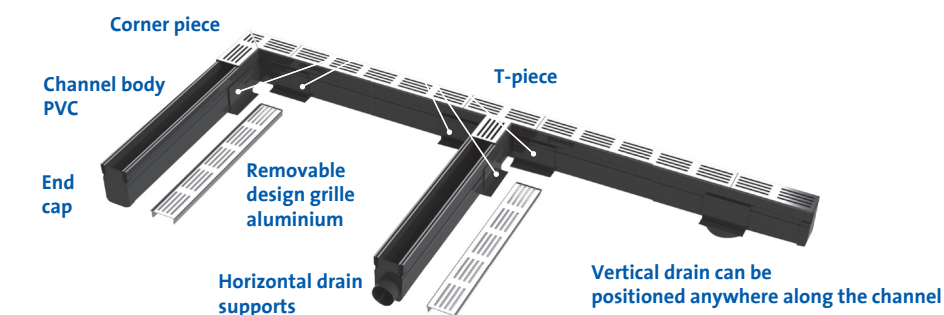
UDP 100-65

2/2

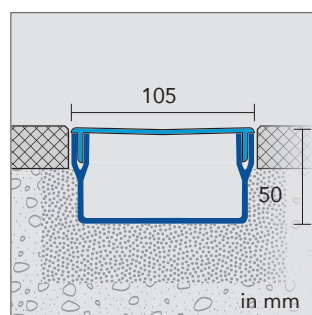
Drainage channel made of plastic (PVC dark gray) with designer grille made of anodized aluminium in silver and black

- Installation Instructions -

Connector fittings for all system components



UDP 100-65



UDP 50-100 (50-105)

INDICATIONS

It is not possible to take every eventuality during the installation process into account. These installation instructions are provided as a recommendation and must be adapted to the specific conditions of the installation site in each individual case. The generally recognised rules of good engineering practice must always be observed! The following applies to all products/materials: Usability in terms of mechanical and chemical loads should be carefully checked in each case before laying the tile.



Corner piece

UDP 50-100 (50-105)



T-piece

UDP 50-100 (50-105)



End cap
right/left

Universal
connector

UDP 50-100 (50-105)

DURAL GmbH

Südring 11

D-56412 Ruppach-Goldhausen

Phone +49(0) 2602/9261-0

Fax +49 (0) 2602/9261-50

info@dural.com